

# eTrex

## VENTURE

### QUICK START GUIDE



**GARMIN**  
Step-by-Step Instructions  
to Get You Started

## Battery Installation and Transferring Map Data

### 2 Installing the Batteries

The eTrex Venture operates on two AA batteries (not included), which are located in the back of the unit. Rechargeable Alkaline, NiCad or Lithium batteries may also be used. Stored data will not be lost when the batteries are removed.

#### To install the batteries:

1. Remove the battery cover from the back of the unit by turning the D-ring 1/4 turn counter-clockwise and pulling it away.
2. Insert the batteries observing proper polarity as shown at the right.
3. Reinstall the battery cover by pressing in and turning the D-ring 1/4 turn clockwise.



## Operating the eTrex Venture

### 1 Button Function



The **CLICK STICK**: (When moved or pressed in, this button 'clicks')

- Press in and release to enter highlighted options or confirm messages.
- Press in and hold for two seconds to mark your current location as a waypoint.
- Move Up/Down or Right/Left to move through lists, highlight fields, on-screen buttons, icons, enter data or move the map panning arrow.

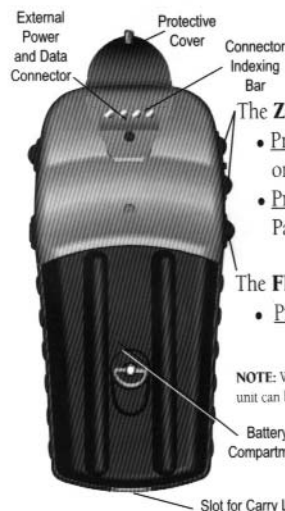


The **PAGE** button:

- Press and release to cycle through the main pages.

The **POWER** button:

- Press and hold to turn the unit On/Off.
- Press and release to toggle the back-lighting On/Off.



The **ZOOM IN and OUT** buttons:

- Press and hold to Zoom in and out on the Map Page.
- Press and hold when on the Satellite Page to adjust the screen contrast.

The **FIND** button:

- Press and release to access the Find Menu.

**NOTE:** While designed to be held and operated in the left hand, the unit can be used with the right hand, if preferred.

### 3 MapSource® "Points of Interest" Data

You can transfer points of interest data such as restaurants, shopping malls, lodging, attractions, services, and transportation to the eTrex Venture from a GARMIN MapSource "Points of Interest" CD-ROM. To transfer data, you will need the eTrex PC Data Cable provided with your unit. See your GARMIN dealer or access the GARMIN website ([www.garmin.com](http://www.garmin.com)) for availability of this product.

#### To transfer data:

1. Remove the Power/Data Port cover on the back of the unit by lifting up on the protective cover on the back of the unit.
2. Connect the serial port connection on the cable to the PC serial port.
3. Connect the remaining cable connector to the back of the eTrex Venture by orienting the slot on the connector with indexing bar on the back of the unit. Then, slide the connector in place.
4. Turn on the eTrex (Step 4) and follow instructions for map data transfer provided in the MapSource User's Manual.

## Start Up, Backlighting/Contrast Adjustment

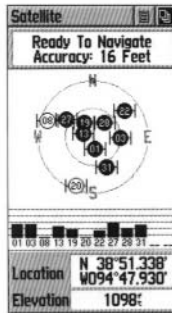
### 4 Start Up Sequence

Begin operation by turning the eTrex Venture On.

#### To turn the unit On:

1. Press and release the **POWER** button.
2. Press the **PAGE** button to acknowledge the copy-right. Carefully read the warning message and press the **PAGE** button to acknowledge.
3. Observe that the Satellite Page will appear.

The first time you use the unit it may take as long as 5 minutes to establish a position. After that, only 15 to 45 seconds. When the eTrex Venture has acquired enough satellite signals to determine your location, a "Ready To Navigate" message will appear at the top of the page. Your location coordinates, as well as estimated altitude, will be shown at the bottom of the page.

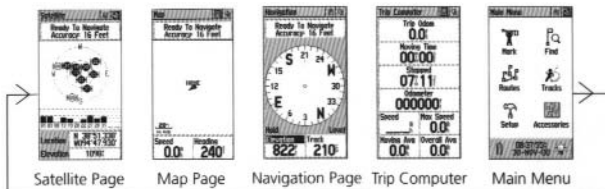


Satellite Page:  
displaying  
Satellite Position,  
Signal Strength,  
Your Location,  
and Elevation

## The Main Pages, Setting the Time

### 6 Previewing the Main Pages

All of the information you need to operate the eTrex Venture is found on the five Main Pages (or display screens). To preview these pages, press the **PAGE** button to cycle from one page to the next. The five pages are shown in order below.

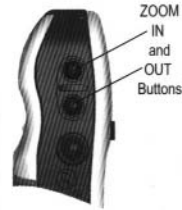
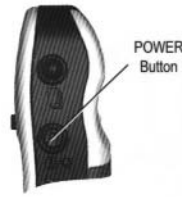


- Satellite Page** - Provides a visual reference of satellites being tracked.
- Map Page** - Displays your movements, waypoints and lat/lon grids.
- Navigation Page** - Provides guidance to your destination.
- Trip Computer** - Provides a variety of trip and navigation data.
- Main Menu** - A directory of advanced features and settings.

### 5 Backlighting/Contrast Adjustment

#### To turn the backlighting On and Off:

1. Press and release the **POWER** button to turn the backlight feature On.
2. Press and release again to turn the backlight Off.
3. If no button is pressed (after 15 seconds\*), the backlight will turn Off automatically.



#### To adjust the display screen contrast:

1. Use the **ZOOM IN** and **OUT** buttons to adjust the contrast when the Satellite Page is displayed.

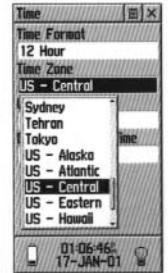
*\*(To set the backlight feature for longer On time, refer to the Owner's Manual.)*

### 7 Setting the Time

If the time displayed is not correct for your Time Zone, you may need to set the correct time.

#### To set the time:

1. Use the **PAGE** button to access the Main Menu.
2. Use the **CLICK STICK** to highlight the Setup Icon and then press it in to display the Setup Menu.
3. Use the **CLICK STICK** to highlight the Time icon and then press it in to display the Time Page.
4. Use the **CLICK STICK** to highlight the 'Time Zone' field then press it in to display the list of time zone options.
5. Highlight a time zone from the 8 U.S. time zones or 24 international time zones (as defined by the nearest city or geographic location) and then press in on the **CLICK STICK**.
6. Observe the correct time displayed at the bottom of the page.



## Basic Navigation

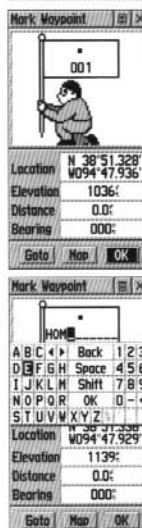
### 8 Marking Your Location as a Waypoint

#### To mark your location as a waypoint:

1. Press in and hold the **CLICK STICK** for two seconds to display the Mark Waypoint Page. Your current location is marked as a waypoint and automatically assigned as a three digit number.
2. With the 'OK' button highlighted, press in on the **CLICK STICK** to save the Waypoint.

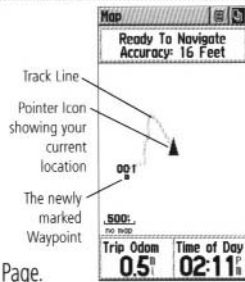
#### To personalize a waypoint by renaming it:

1. Use the **CLICK STICK** to highlight the 3-digit number in the flag.
2. Press in on the **CLICK STICK** to display the Data Entry Keyboard.
3. Use the **CLICK STICK** to highlight text and numbers you want to use in renaming the waypoint, pressing it in to enter each character.
4. Highlight and enter the 'OK' key when finished.



## 9 Using the Map Page

Now that you have created a waypoint to mark your location, you can begin to move about using the Map Page. You can see where you are, where you've been, where you're going, and find your way back to where you started.



### To use the Map Page:

1. Use the **PAGE** button to access the Map Page.  
The new waypoint you marked will be displayed on the map.
2. Press the **ZOOM IN** button to get a more detailed view of the map.
3. Walk or drive around for a few minutes and then stop.
4. Observe that your location and movement is shown by the 'Pointer Icon' and that your path of travel (a Track) is shown by a dotted track line.
5. You may follow your track back to the waypoint, or you can save time and go directly to it using a 'Goto', as explained in Steps 10 and 11.

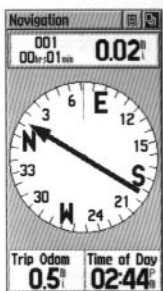
## Basic Navigation

### 11 Navigating To a Waypoint

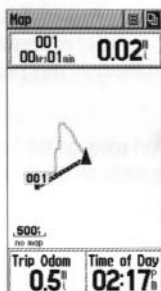
Use the Goto to navigate to a waypoint. Once the Goto is activated, the eTrex Venture will help you navigate to the waypoint.

#### To navigate to a waypoint:

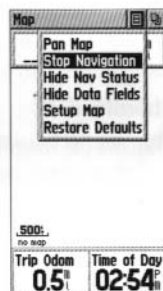
1. Observe the Navigation Page. The page will display a 'Bearing Pointer' and a 'Compass Ring'. The Bearing Pointer indicates the direction to go. The compass will orient itself when you begin to move.
2. Once you begin moving, the 'Bearing Pointer' will point in the direction you must go to reach the waypoint. Because you can't always travel to the waypoint in a straight line, you will need to refer to the Bearing Pointer from time to time to maintain your direction.
3. Use the **PAGE** button to move back to the Map Page and observe your progress toward the waypoint. You will see your location marked by the Position Icon and straight dark line leading from there to the waypoint. Move back and forth between these pages to check your progress and get directions.
4. When you are close to the waypoint an "Arriving at Destination" message will appear.
5. To stop navigating, highlight the on-screen Options Menu button at the top of the Map or Navigation Page, then press in on the **CLICK STICK**. Select 'Stop Navigation', then press in on the **CLICK STICK**.



A Goto on the Navigation Page



Map Page on a Goto



Map Page Options Menu

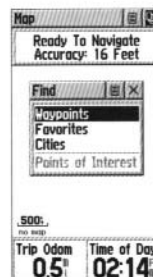
## Basic Navigation

### 10 Finding a Destination (Waypoint)

You can find a destination using the Find Menu. A destination can be any map item such as a Waypoint, City, or Point of Interest (Restaurant, Museum, Landmark, etc.). For this basic exercise, find the waypoint you created in Step 8 and use it as a destination.

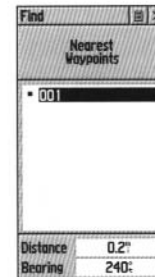
#### To find a destination (Waypoint):

1. Press the **FIND** button to display the Find Menu.
2. Use the **CLICK STICK** to highlight the 'Waypoints' category and then press it in.
3. You will be prompted to select find 'Nearest' or find 'By Name'. Highlight 'Nearest' and press in on the **CLICK STICK** to display the Nearest Waypoints List.
4. Use the **CLICK STICK** to highlight the waypoint name or number and then press it in to display the Information Page for that waypoint.
5. Use the **CLICK STICK** to move the highlight cursor to the on-screen 'Goto' button at the bottom of the Information Page.
6. With the on-screen 'Goto' button highlighted, press in on the **CLICK STICK** to activate the Goto navigation feature.



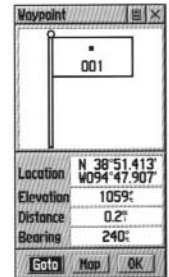
Find Menu

The Find Menu can be accessed from anywhere on the eTrex Venture by pressing the FIND button.



Waypoints List

The Nearest Waypoints List displays only those waypoints nearest your location.



Waypoint Information Page

The three on-screen buttons at the bottom of the Information Page can start you on an active direct route to the waypoint (Goto), allow you view the waypoint on the map (Map), and confirm any changes to the waypoint information (OK).